



Dear Customer,

Thank you for choosing a BC Acoustique product. Its implementation has been our know-how, both in terms of design to the manufacturing. Electronic components and mechanical parts correspond to the selection criteria of very high quality. Operation and finish of each product have been checked before delivery. To obtain best results, please read the advice contained in this document.

## Summary


Safety instructions .....	02
Glossary .....	02
Recommandations .....	02
Recycling product .....	03
Location and precautions .....	03
Power sources .....	03
Warranty .....	03
Main view and uses .....	04
Rear panel and connections .....	05
Preparing the turntable .....	06
Operation and start-up .....	07
Bluetooth® connection .....	07
Changing the cartridge .....	07
Recording with a computer .....	08
Audacity software installation .....	08
Specifications and accessories .....	09
Notes about records .....	10
Troubleshooting .....	10
Notes .....	11

## Safety instructions

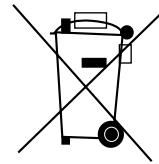
We invite you to read the instructions on the proper use of your product carefully. They will ensure the proper functioning of the latter and it safely.

- Do not use this device in a wet area or near water.
- Clean only with a dry cloth. As a precaution it is best to unplug the unit before handling.
- Never cover the ventilation of the unit. Be sure to install the unit in a well ventilated location.
- Do not install near heat sources.
- Take great care of the power cord and plugs electrical connection. In particular, do not walk, or press the power cord, specifically at plugs, power plant and the output of the power supply.
- Use only parts and accessories recommended by BC Acoustique.
- Be sure to use an appropriate power supply to the power jack on the unit outlet. Especially if the device is equipped with a ground, it is necessary to use it.
- Unplug the apparatus during lightning storms or when not in use for a long time.

## Glossary

 The CE mark indicates that this product complies with European directives called «low voltage» (2006/95/EC), Electromagnetic Compatibility (2004/108/EC) and apply eco-design requirements for energy products (2009/125/EC) when the appliance is installed and used in accordance with the user manual.

For continued compliance only BC Acoustique accessories must be used with this product and servicing must be performed by specialized and qualified staff.



The WEEE symbol is that of the European Union regarding the recycling of electrical and electronic equipment. It indicates that this product contains electrical and electronic components that can be reused, recycled or recovered. Therefore this product should not be disposed of in your regular trash.

Thank you to return the unit or contact your authorized dealer for more information.



This symbol alerts the user to the presence of «dangerous voltage» uninsulated which may pose a risk of electric shock to the user.



This symbol alerts the user that the documentation that comes with the device contains important instructions for maintenance and proper use of the product.

## Recommandations

In the case of headphones, do not use it to excessive noise. Otherwise, prolonged listening at high volume levels may cause permanent damage to your hearing.

When disposing of used batteries, please comply with governmental regulations or rules defined by the public statements relating to the environment applicable in your country.

Never expose the batteries (battery pack or batteries installed) to excessive heat such as sunshine, fire, etc ...

## Product recycling

At the end of its useful life, this product should not be disposed of with regular garbage, but returned to a collection point for the recycling of electrical and electronic components. This point is emphasized by the symbol on the product, the instruction manual and on the packaging.

The materials can be reused in accordance with their markings. Through reuse and recycling of raw materials or any other form of recycling, you make an important contribution to environmental protection. Your municipality can tell you where is the point of the nearest collection site.

## Location and precautions

Avoid placing it in direct sunlight or near a heat source. No source of light shall be placed on the apparatus. Also avoid all sources that could cause vibration, dust, cold or moisture. The recommended ambient temperature range is 5-35 °C.

The device must be installed on a stable, level surface. Do not place the unit on an unstable surface or shelf. The unit may fall, causing serious injury to a child or adult as well as serious damage to the product. Do not place other equipment on top of the unit.

Due to stray, turntables or CRT TVs magnetic fields should not be located near the unit to avoid possible interference.

## Power sources

The unit should be operated only from the type of power source indicated on the label. If you are unsure of the type of power available to you, thank you to contact your dealer or the company responsible for the power supply in your area.

Turn off device if you do not intend to use this unit for a long time.

In case of prolonged absence from home, it is recommended to unplug from the electrical outlet.

Make sure each cable is correctly inserted. To prevent hum or background noise, do not mix different other antenna cable with the power cord or speaker wires.

## Warranty

BC Acoustique warrants this product parts and labor (under the conditions specified below).

BC Acoustique will repair or replace (at its discretion) this product or any defective parts. The warranty period may vary by country. If in doubt, contact your dealer. Always retain proof of purchase of this product.

For warranty service, please contact the BC Acoustique authorized reseller from which you purchased this product. If your dealer is not itself repair the product, it can be sent to BC Acoustique authorized after-sales service. If necessary, you will need to ship this product in its original packaging or packaging affording an equal degree of protection.

Proof of purchase such as an invoice stating that the product is covered by the Guarantee must be presented for any warranty claims.

This warranty is void if:

- The factory serial number has been altered or removed.
- This product was not purchased from an authorized reseller BC Acoustique. To confirm that the serial number has been altered or that the product was purchased from an authorized reseller BC Acoustique, you can call BC Acoustique or distributor in your country.
- If the power supply cord or plug is damaged.
- If liquid has been spilled or if objects have fallen inside.
- If the unit has been exposed to rain or water.
- If the unit is dropped or damaged in any way.
- This warranty does not cover cosmetic damage or damage caused by or due to force majeure, an accident, misuse, abuse, negligence, commercial use or modification of part any product.
- This warranty does not cover damage caused by or resulting from misuse, a maintenance or improper installation or repairs made or attempted by anyone other in BC Acoustique or not BC Acoustics dealer or technician approved, authorized to carry out maintenance and repair under warranty for BC Acoustique. Any unauthorized repairs will void this warranty. This warranty does not cover products sold «AS IS».
- REPAIR OR REPLACEMENT AS PROVIDED UNDER THIS WARRANTY IS THE EXCLUSIVE REMEDY OF THE CONSUMER.
- BC ACOUSTIQUE NOT BE LIABLE FOR ANY INCIDENTAL OR CONSEQUENTIAL DAMAGES.

## Warranty

- Some countries do not allow the exclusion or limitation of incidental or consequential damages or exclusions of implied warranties. Therefore, the limitations or exclusions herein may not apply. This warranty gives you specific legal rights, in addition to other rights which vary from state to state or country to country.

## Uses

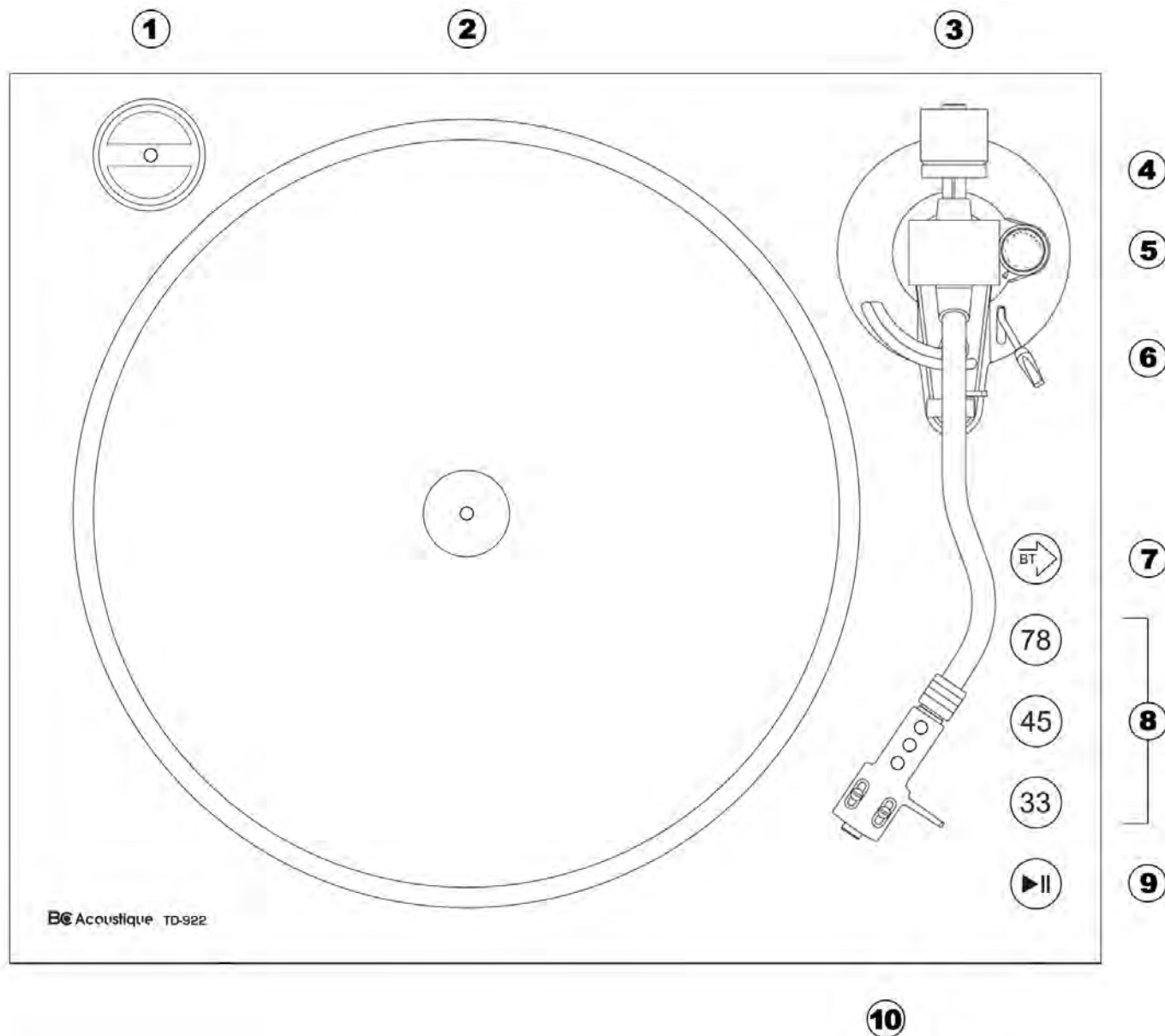
### ④ STYLUS PRESSURE ADJUSTMENT RING

Adjusts stylus cartridge's pressure alignment.

### ⑤ ANTISKATING

This applies inward force to the tone arm so it doesn't skip outward across the record due to the centrifugal force of the record spinning.

## Main view and uses



### ① ADAPTOR FOR EP RECORDS

When you want to listen to EP record, attach the 45 RPM adaptor to the center spindle.

### ② TURNTABLE PLATTER

The platter is equipped with a slip mat. This makes it easier to manipulate the record for scratch performance. Place vinyl records centered on the turntable platter.

### ③ COUNTERWEIGHT

Adjustment creates the proper downward pressure of the stylus to the record. Attach now by sliding the counterweight onto the rear of the tone arm.

### ⑥ ARM LIFTER LEVER

Use this lever to control the up and down action of the tone arm. We recommend using the arm lifter to avoid damaging records and styluses, because it is safer and more certain than to do it manually.

### ⑦ BLUETOOTH® CONNECTION

Power on the turntable, it will search for the speaker which Bluetooth® is open and pairing automatically, when the turntable is in searching the lateral blue led is flashing, after finish pairing, the led will solid light and there is beep sound to prompt. Press BT button can play or pause the music playback.

## Uses

### ⑧ 78 / 45 / 33 - ROTATION SPEED SETTING BUTTONS

Press these buttons to select the platter's rotation according to your speed indicated on the record for 33, 45 or 78 revolutions per minute.

### ⑨ ►|| PLAY / PAUSE BUTTON

Press this button to start playback or to resume playback after a pause.

### ⑩ HEADSHELL

This is a universal headshell that allows the cartridge to be changed easily. The turntable comes with the Audio Technica AT-3600 L cartridge, already inserted in the headshell.

Install cartridge here. During installation, attach the stylus protector to guard the stylus from damage.

Attach the headshell by inserting it into the front end of the tone arm and then turn the locking nut clockwise.

**Note:** Before use, remove the protective cover by plastic that protects the cartridge.

## Rear panel and connections

**WARNING:** Be sure to turn off the power of your product before making any connections. Similarly it is best to cut the power of other devices you want to connect to your amplifier. Make sure the turntable is on a flat surface.

### ① GROUND TERMINAL

Use the grounding wire of the included RCA audio cable to connect this connector to the grounding terminal of the amplifier (for example).

#### Notes:

- 1- It is NOT an electrical safety ground.
- 2- If noise speaker is audible: If connecting the grounding wire of the audio cable to the grounding terminal of this unit does not reduce noise, disconnect the grounding wire and check the sound again. Use this method (connect and disconnect) that has the least noise.

## Connections

### ② ANALOG (OUTPUTS - RCA)

RCA «OUTPUT L and R» are used for connecting the turntable to the RCA analog input on your amplifier. These outputs are designed to generate «analog» said signals (as opposed to «digital» signals). Cable compatible with these sockets are of the type «RCA», they are traditionally identified by a color code «RED» to the RIGHT and «WHITE» channel for the LEFT channel.

### ③ PHONO / LINE

The turntable has a built-in PHONO preamplifier that is disengaged if you have an external preamplifier (or that of your amplifier).

- If you want to use the signals amplified by the internal amplifier of the turntable, position this cursor on PHONO (for example to send the sound of the turntable on amplified speakers).

- If you want to use an external PHONO preamplifier, position this cursor on LINE.

- If you want to connect the turntable to a computer via USB, set this cursor to PHONO.

**IMPORTANT:** In PHONO position, if you connect the turntable to the PHONO input of your amplifier, the sound produced by the speakers or the headphones will be much too loud, which could damage your equipment or be detrimental to the listener.

### ④ USB PORT

The sound of your vinyl record is converted to digital with a maximum resolution of 48 KHz / 16 bits.

Use the USB cable that came with the device to connect the turntable to your computer. A CD with Audacity recording software is also provided.

Refer to Page 8, *RECORDING WITH A COMPUTER* section for more information.

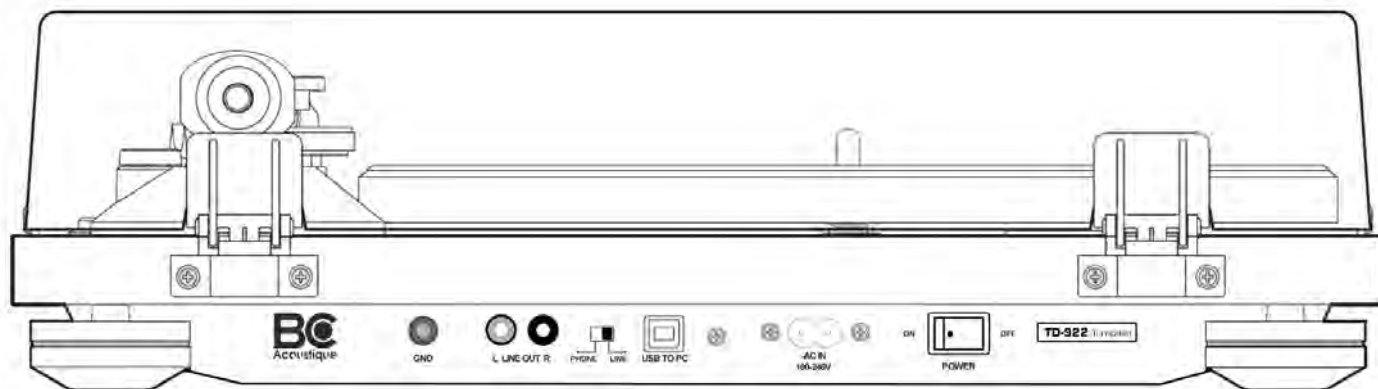
### ⑤ AC MAIN INPUT

After all connections to the amplifier have been made, plug the power cable into a power outlet and turn on the power.

Your turntable is now ready for use.

### ⑥ POWER ON/OFF

Used to turn the turntable on and off.



## Preparing the turntable

Make sure the turntable is unplugged from the wall outlet and place it on a flat surface so that the groove of the disc can be read accurately.

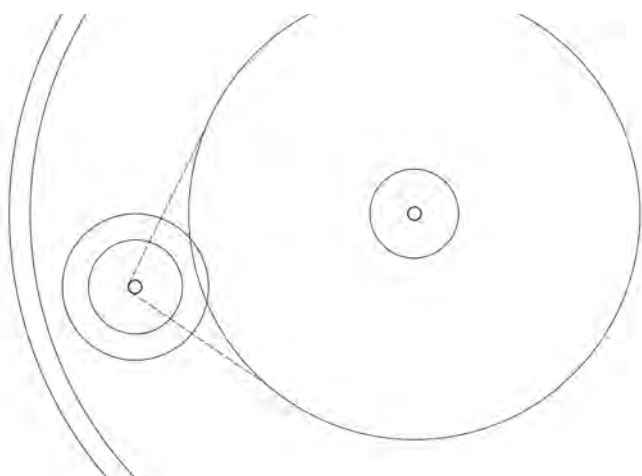
### AT THE FRONT OF THE TURNTABLE

-1- Hold the front edge of the dust cover and gently lift it open completely until it stops.

-2- Loop the belt around the motor pulley:

Use a finger to pull the rubber belt that is wrapped around the sub-platter through the round opening and loop it around the motor pulley.

Make sure that the rubber belt is not twisted after you put it in place.



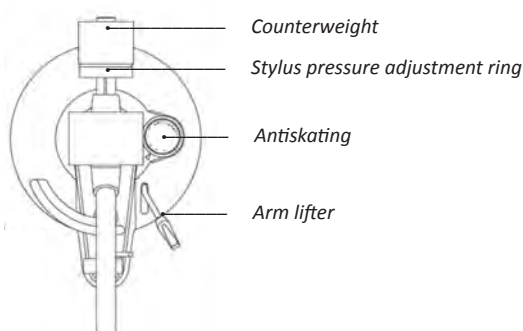
Once the belt is in the right position, rotate the platen several times to make sure that the assembly is secure.

-3- Replace the felt mat on the platter and position your record.

-4- Place the counterweight at the end of the tone arm and gently push it while you turn it to secure it to the arm.

-5- Attach the headshell by inserting it into the front end of the tone arm and then turn manually the locking nut clockwise.

-6- It is now necessary to balance the tone arm and adjusting the stylus pressure using the adjustment ring to control the pressure of the cartridge with the Antiskating wheel.



-7- Set the Antiskating dial to zero.

-8- Slide the tone arm clasp to the right to remove it.

-9- Raise the tone arm lifter and shift the tone arm to the left slightly.

-10- Lower the arm lifter.

-11- Before adjusting the counterweight, remove the protective cap of the cartridge and make sure it does not touch the unit. Now turn the counterweight until the tonearm is horizontal.

-12- Return the tone arm to its original position, and use the clasp to lock it.

-13- Turn the stylus pressure adjustment ring so that the center line aligns with 0 on the scale.

-14- Turn the counterweight so that the stylus pressure adjustment ring scale matches the stylus pressure value specified for the cartridge.

Note: The pressure of the stylus with the cartridge provided (AT-3600 L) is  $3.5g \pm 0.5g$ .

### AT THE REAR OF THE TURNTABLE

-15- Connect the turntable to the PHONO input of your amplifier using an RCA-RCA cable (pair usually terminated with Red and White RCA connectors).

Make sure that at the back of the deck the PHONO output selector is set to LINE.

In case you connect your turntable to active speakers, set the output selector to PHONO to activate the phono preamplifier built into the turntable.

-16- Connect the AC power cord to the AC IN connector of the product and to a power outlet wall area.

-17- On the turntable, press the unit's POWER ON button to turn it on.

### Remark about AUTO-STOP function:

From a certain angle usually corresponding to the last engraved groove of a vinyl, the turntable stops.

Some vinyl records do not trigger auto-stop function because their last groove do not exceed the angle provided for this purpose.

## Operation and start-up

### AT THE FRONT OF THE TURNTABLE

-18- Place a record on the turntable platter. When playing a 45 RPM large-hole single record, use the included adapter. Select the rotation speed indicated on the record (33, 45 or 78 RPM).

-19- Slide the tone arm lock clasp to the right to release the tone arm.

-20- Move the tone arms to the track where you want to start playback.

This operation can be done manually or, as we advise you, use the arm lifter and the slowly lower the tone arm to start playback.

### IMPORTANT Notes

- During the playback do not touch the tone arm or the record as you may damage the stylus or cause scratches on the record.

- Do not force the platter to stop rotating during playback as this may cause malfunctions.

This turntable is NOT designed for DJs who use direct drive turntables.

### -21- ANTISKATING ADJUSTMENT

To start, set the antiskating wheel at position 2, then during playback, try the other positions until you find, by listening to, the right balance between the right and left channel volumes.

## Bluetooth® connection

This turntable integrates a Bluetooth® transmitter to send music to your active speakers wirelessly.

-1- Turn on the turntable POWER ON.  
The switch is located on the back of the unit.

-2- On the right side of the turntable a blue led starts to blink. It indicates that it sends a connection request. You should be able to see on your Bluetooth® speakers or hi-fi system the connection name of the deck that is: «BC-TD-922.»

-3- When the turntable and the Bluetooth® speaker is connected, the pairing lamp will stay lit without blinking.

Pairing might take some time depending on the connected device.

Refer to the operation manual of the Bluetooth® speaker for information about how to use it.



When connecting to a Bluetooth® speaker, move other Bluetooth® speakers and receiving devices at least 10 meters away from this unit or turn them off.

-4- Press the BT button to send music or pause it.

-5- To turn off Bluetooth® connection, press the BT button during 3 seconds. The led on the right side of the turntable will go off when the Bluetooth® connection is disabled.

## Changing the cartridge

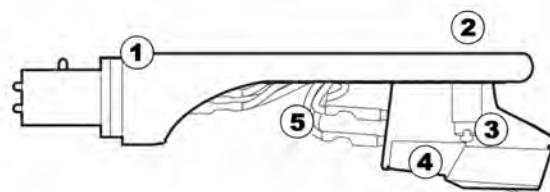
To change the cartridge, first remove the headshell from the tone arm. Remember to attach the protective cap to protect the stylus cartridge during this operation.

An Audio Technica AT-3600 L type cartridge is installed in this turntable.

Compatibility:

VM type cartridges have the same characteristics as MM type cartridges.

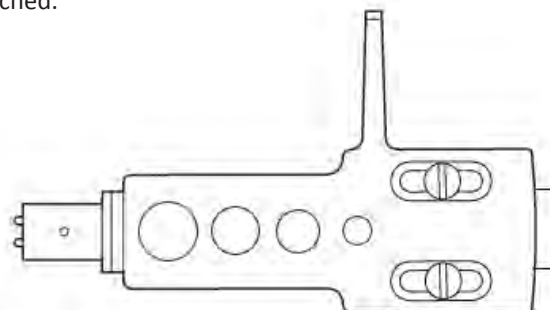
-1- Disconnect the shell lead terminals from the cartridge.



- ① Nuts
- ② Headshell
- ③ Screws
- ④ Cartridge
- ⑤ Shell leads

-2- Loosen the screws and remove the cartridge.

-3- Attach the new cartridge and tighten the screws. See the illustration below for the position of the screws when attached.



-4- Connect the shell lead terminals to the cartridge.

Signal	Color
Left Chanel +	White
Left Chanel -	Blue
Right Chanel +	Red
Right Chanel -	Green

-5- Once the balance done, Attach the headshell by inserting it into the front end of the tone arm and then turn the locking nut clockwise.

-6- Balance the tone arm and adjust the stylus pressure. Follow this procedure on page 6 in «-6- Balancing the tone arm and adjusting the stylus pressure».

## Recording with a computer

The sound of your records can be digitally converted on a computer by using the USB cable provided in this package to connect this turntable to a USB port on your computer.

**Important notes:** You must install a software allowing the audio recording on your computer.

Use the USB cable that came with the turntable to connect the turntable to your computer.

Make sure you do not disconnect the USB cable or put the turntable into standby mode while recording the vinyl on the computer so as not to cause a bad your computer.

### DRIVERS

This turntable will run with the standard Windows or OS X driver. There is no need to install a specific driver.

### SYSTEM REQUIREMENT

You will need a computer with a free USB port and a Microsoft® operating system of at least Windows® 7, 8, 10, XP, Vista.

### CONNECTING WITH A COMPUTER

-1- Turn the computer on and confirm that the operating system is working correctly.

-2- Use the USB cable to connect the computer and the turntable.

-3- Press POWER ON button located at the rear panel. The computer will automatically detect the turntable's USB port and identify the unit as «USB Audio CODEC».

-4- Use your audio recording software installed on your computer.

### Note on computer settings regarding audio capture:

On a computer using a Windows OS, you will need activate the CONFIGURATION PANEL and find the AUDIO menu to set the desired sound quality format for recording.

For information, the quality of an Audio CD is 16bits / 44.1KHz. This recording format may be sufficient for most users. You can, however, if you wish, record in a higher quality standard, in 16bits/48KHz for example.

Lowering the sample rate value will reduce the size of the files, but will also decrease the audio quality of the recorded sound.

## Audacity software installation

Connect the turntable to your computer with the USB cord supplied with the device.

Insert the supplied Audacity software disc into your computer's CD drive, double-click the program to start the installation procedure.

Once the CD inserted in the CD player of your computer, double-click on the software installation icon.

Click «NEXT» to proceed to next step.



When installation is complete, click "FINISH".



Start "Audacity" software by double-clicking on the program symbol on your desktop, or select the relevant item in your start menu.

Select the menu item "PREFERENCES" in the "EDIT" menu. Select "DEVICES".

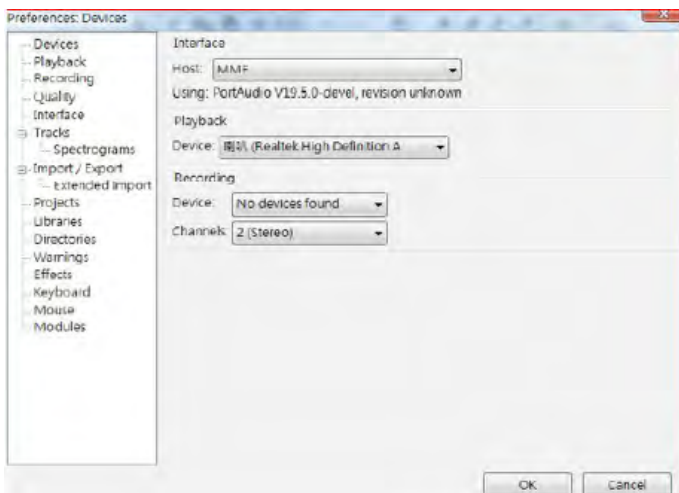
Change the following settings in the "Recording" area:

- Device: "USB Audio CODEC"
- Channel: "2 (Stereo)"

Note: The option "USB Audio CODEC" is only available if you have correctly connected the turntable before you start the software.



## Audacity software installation



The picture below shows all the controls used to record your vinyl records as digital files on the computer.



To start recording your vinyl, proceed as follows:

Click on the «Record» button to start the record.



To abort the recording, click



To resume recording, click again



To stop recording, click



The data will be recorded on the audio track.

## Specifications

DC motor with beld drive system  
Static-balanced S-shaped tone arm  
Platter: Zamac

Speed rotation: 33-1/3, 45 and 78 RPM  
Bluetooth®: Codec Apt-X®, AAC, SBC  
USB PORT (16bits/48kHz)  
Antiskating function  
Auto-Stop function

Wow and flutter: 0.1%  
S/N ratio: 60dB (A-weighted, 20kHz)  
PHONO Preamplifier activable or not

### Cartridge specifications

Audio-Technica AT-3600 L  
Cell type: MM  
Stylus Shape: Elliptical  
Recommended Load Impedance: 47k ohms  
Diamond size: 0.6 mm Bonded Round Shank  
Output voltage: 2.5 mV (± 3dB at 1kHz)  
Frequency response: 20 - 20,000 Hz  
Channel balance < 2.5 dB (1 kHz)  
Channel separation > 18 dB (1 kHz)  
Suggested stylus force: 3.5g ±0.5g  
Weight: 5g ±0.3g  
Aluminum cantilever  
Replacement stylus: ATN-3600L

### Connections

1x RCA Analog output pair (PHONO or LINE)  
1x USB Port (Type-B) to computer  
1x Bluetooth® transmitter

### General

Detachable power cord  
AC Power: 100-240V 50/60Hz

### PRODUCT

Dimensions (W×H×D): 430 x 120 x 365 mm  
Weight: 5.16 kg

### BOX

Dimensions (W×H×D): 500 x 210 x 420 mm  
Weight: 6.48 kg

### EAN CODES

TD-922 (BN) Bamboo Natural: 0634154407103  
TD-922 (BB) Bamboo Black Glossy: 0634154407097  
TD-922 (BR) Bamboo Red Glossy: 0634154407080  
TD-922 (WA) Walnut: 0634154407073

## Included accessories

Check to be sure the box includes all the supplied accessories shown below. Please contact the store where you purchased this turntable if any of these accessories are missing or have been damaged during the transportation.

1x Turntable TD-922  
1x Headshell with cartridge AT-3600 L preinstalled  
1x Zamac platter and his beltdrive  
1x Felt mat  
1x 45 RPM adaptater  
1x Dust cover with 2x attached rubber feet  
2x Cover hinges  
1x RCA audio cable  
1x USB cable  
1x Power cord  
1x Audacity software CD  
1x This manual

## Notes about records

### HANDLING RECORDS

Never touch the playback side of the record. Hold the record by the edge, so as not to leave fingerprints on the surface.

When your listening is over, take care to put the record in its pocket.

### STORING RECORDS

After playback, put the disc in its pocket. Do not expose the records directly to direct sunlight or heat and never leave them in a car parked in the sun.

Do not stack multiple records or place heavy objects on them. The inclined position is also not recommended as it may result in warping, mold growth or other damage.

Pay special attention to prevent the record from being in contact with an object that damages the grooves.

### CLEANING THE RECORDS

Fingerprints and dust on a record may cause noise or sound jumps and may damage the record itself or the stylus of the cartridge.

Use a commercial record cleaner. Do not use thinner as chemicals may damage the surface of the record.

### CLEANING THE STYLUS

If the stylus of the cartridge is bent or damaged, it may damage your record or cause a dysfunction.

Handle the tone arm holding the headshell carefully and do not touch the stylus of the cartridge with your hand.

Use a commercially available cleaner to make sure you do not damage the stylus.

### REPLACING THE CARTRIDGE / STYLUS

When the end of the stylus is worn, the sound quality deteriorates. The life of a stylus is about 300 hours.

Please use an Audio-Technica AT-3600 L replacement cartridge.

### WARNING

Before changing the cartridge, make sure the turntable is disconnected from the current to prevent loud noises and sudden occur.

Note: Bent stylus due to, for example, insufficient care provided by the user are not covered by the warranty.

## Troubleshooting

Here you will find a number of fault description and possible solutions we invite you to read in order to ensure the possibility of an actual breakdown of your device.

### The unit does not turn on

- Make sure the power cord is properly connected.
- Make sure the plug is fully inserted into the wall outlet and there is power.
- Make sure the camera is turned on.
- Check the fuse in the mains plug or adapter if necessary.

### There is no sound

- Make sure the unit is not in standby mode.
- Check that the source component is connected properly.
- Make sure your speakers are properly connected.

### The pitch is wrong (too fast or too slow)

Make sure you have selected the rotation speed (33, 45 or 78 rpm) corresponding to the record speed you are listening to.

### Jumps during playback

- Make sure the record is not subject to vibration or external shocks from external sources.
- Check if the record is not scratched.
- Balance the tone arm and readjust the stylus pressure. The stylus and sound can jump if the stylus pressure is less than the value specified for the cartridge.

### Noise occurs when a record is playing

Noise could occur if the stylus pressure is higher than cartridge's specified value. Readjust the stylus pressure so that is the specified value.

### Playing the record is impossible, there is noise

- Remove the protective cap from the stylus.
- Clean the record with a dedicated commercial product if the record has fingerprints or dust.
- Clean the stylus with a product provided for this purpose.
- If the stylus is worn or damaged, change it. The life of a stylus is about 300 hours.
- Try to keep the turntable as far away as possible from microwave ovens, TVs and other devices emitting electromagnetic waves.

### The Bluetooth® connection with my Smartphone or tablet is not possible.

This turntable integrates a Bluetooth® transmitter to send the sound of your record to the Bluetooth® receiver of your active speakers.

Since the deck does not include a Bluetooth® receiver, it can not be connected to your Smartphone or tablet.

### The Bluetooth® connection does not work with the Bluetooth® speakers I want to connect

- Turn off the turntable and your Bluetooth® speakers, then turn them on again to pair them again.
- Turn off other Bluetooth® speakers within 10 meters of the pair of speakers you want to pair.

### **The connection to the Bluetooth® speaker was successful, but I can not hear the sound of my record**

- Check that the volume of the Bluetooth® speaker is at an audible level.
- Turn off the turntable and your Bluetooth® speakers, then turn them on again to pair them again.

### **Bluetooth® pairing impossible?**

In the event that you are unable to connect your turntable with Bluetooth® speakers (such as the BC Acoustique SP-102-BT), we invite you to use the stereo RCA cable supplied with the turntable to connect it directly to analog input of your active speaker.

In case the above solutions do not remedy your problem, check our FAQ section (Frequently Asked Questions) on our website: [www.bc-acoustique.com](http://www.bc-acoustique.com)

For repair, during or after the warranty, please contact your dealer.

To obtain warranty service and technical support, thank you kindly to register your product online on the website [www.bc-acoustique.com](http://www.bc-acoustique.com) at the product registration section.



BC ACOUSTIQUE  
14 Avenue de l'Europe  
77600 Bussy Saint-Georges - France  
[www.bc-acoustique.com](http://www.bc-acoustique.com)



BC ACOUSTIQUE  
14 Avenue de l'Europe  
77600 Bussy Saint-Georges - France  
[www.bc-acoustique.com](http://www.bc-acoustique.com)